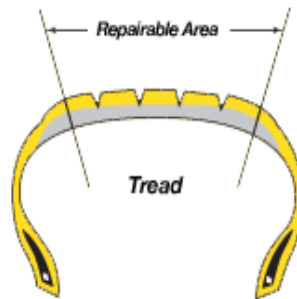


Tire Repair

Any puncture or injury to a tire's tread area obviously affects performance and safety. Proper repair is critical. The puncture must be repaired on both the inside and the outside of the tire. Because all parts of a tire are engineered to function as a single unit, any repair must take that into consideration. Only small, straight-through 3/16" diameter or less punctures in the tread area may be repairable, if no secondary damage has occurred.

NOTE: A tire repair can be properly made only if the tire is removed from the rim; a thorough internal inspection is carried out; and the repair is made from the inside out. A repair must fill and seal the injury, i.e. vulcanized plug and patch. Only specially trained technicians are qualified to repair a tire. Do not attempt to repair it yourself.



* Raffield Tire Safety Advisory for Speed Rated Tires: Repaired tires must not be used in excess of posted speed limits, in race or other competition. Speed Ratings are not valid for repaired, re-treaded, under-inflated or overloaded, excessively worn, damaged or altered tires.